

On-Farm Emergency Planning

Laura Eastwood
Swine Specialist, OMAFRA

Frank Wood
Manager: Industry & Member Services,
Ontario Pork

Jessica Fox
Manager, Swine Health Ontario

Ontario 



ONTARIO PORK

The logo for Swine Health Ontario (SHO), featuring the letters 'SHO' in large blue font with an orange ribbon graphic to the left, and the text 'Swine Health Ontario' in orange below it.

Detection of ASF in Canada will impact every pork producer in the country, not just infected farms, due to severe market interruption.

The thought of preparing for a devastating event such as ASF can be daunting and scary.

It is much better to build a plan now, to think through options, understand farm limitations and not have to make critical decisions in the heat of the moment.

An On-Farm Emergency Plan is a Document that...

Details all pertinent information about the animals, farm property, family members and farm workers

Helps inform others of how best to assist during an emergency (including family, staff, neighbors and first responders)

Sets out processes and procedures for dealing with specific situations so that time and resources are used most effectively and efficiently during the emergency

Helps producers assess the potential risks and identify where they can improve practices or mitigation efforts

Pulls together animal & human welfare, environmental considerations, monetary & insurance implications



What Should A Plan Include?

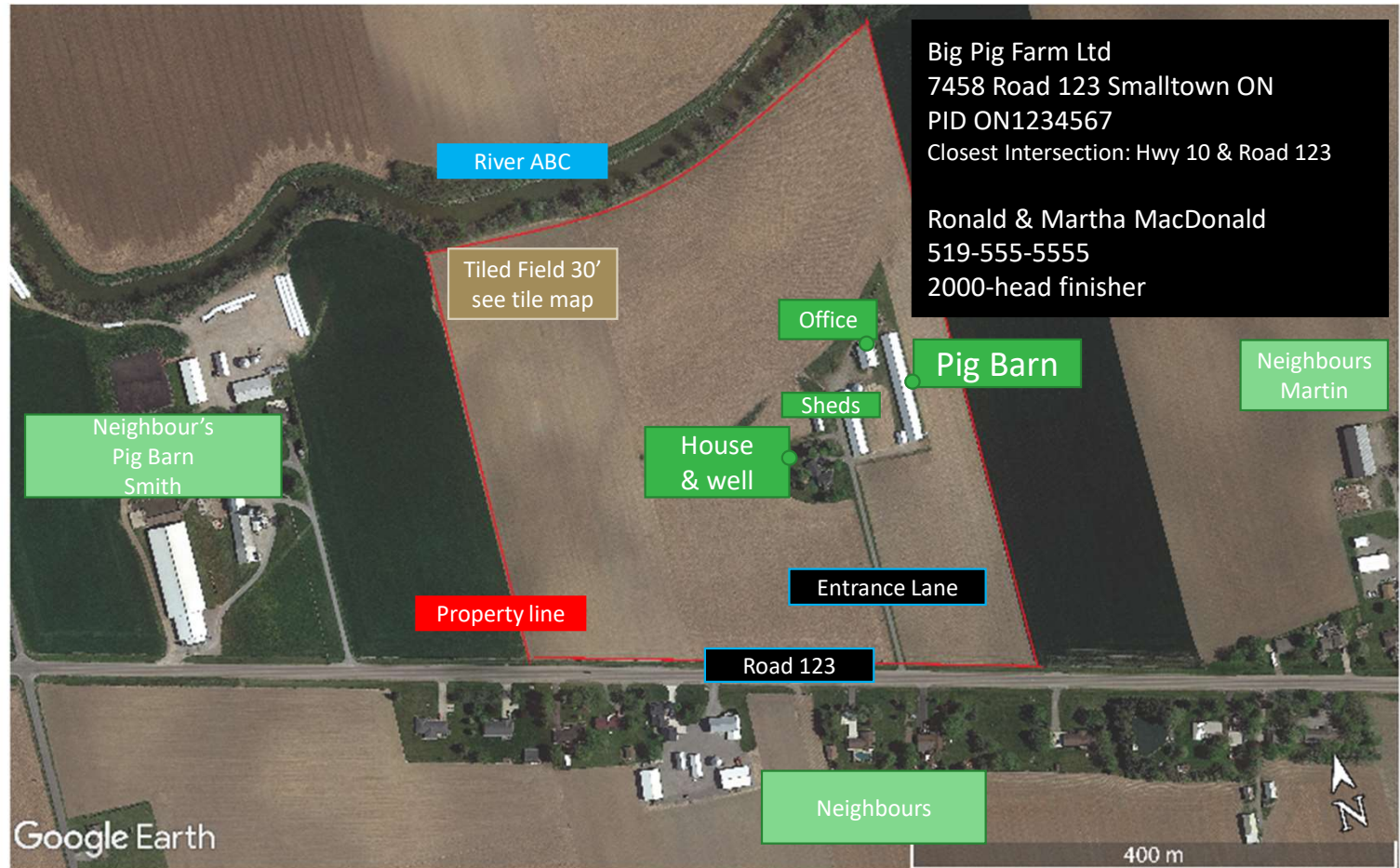




Example: Full Property View

Details to Note:

- Farm Address, PID
- Your name & contact, site manager contact
- Barn details: size, # of pigs typically inside
- Land details: flat, river, tile direction, etc.



Example: Close up Details

Details to Note:

- Farm Address, PID
- Your name & contact, site manager contact
- Barn details: size, layout, pen styles, # of pigs typically in each pen, doors, loading docks, manure storage
- Wells, feed bins, deadstock bins, equipment, driveway flows.



Big Pig Farm Ltd
7458 Road 123 Smalltown ON
PID ON1234567
Closest Intersection: Hwy 10 & Road 123

Ronald & Martha MacDonald
519-555-5555
2000-head finisher

Finishing Barn (66' by 300')
2000 head: 40 pens with 50 pigs each
Hallway runs down center
Under barn Manure Storage
10' deep tank runs length of barn

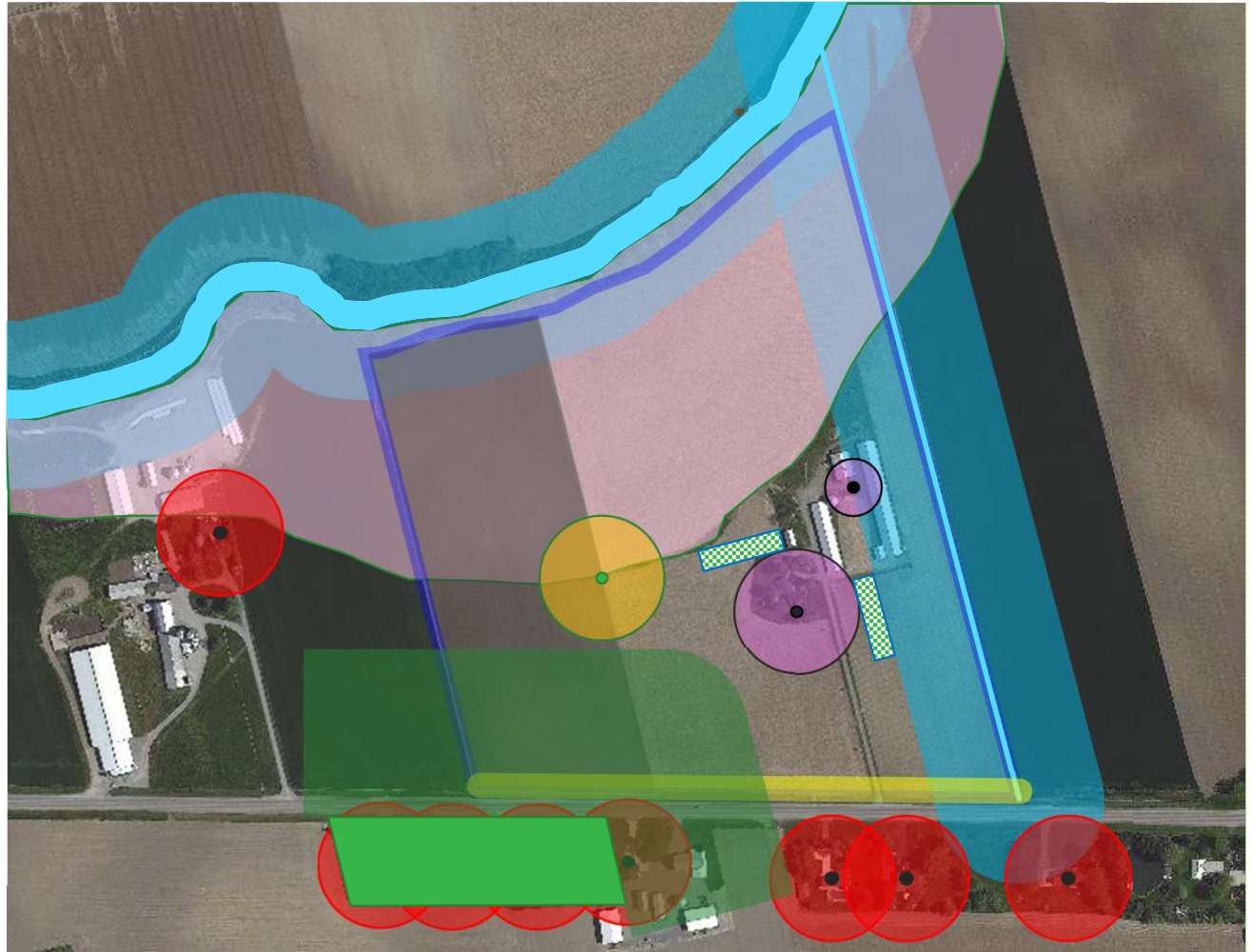




Example: Locating Disposal Sites

- 15m setback to the property line
- 30m setback to the road
- 50m setback to drilled well
- 100m setback to other well
- 100m flowpath to tile inlet
- 100m flowpath to surface water
- Outside of 1/100 year floodplain
- Mapped tile area (narrow spacing)
- 100m setback to off site residence
- 200m setback to residential area

Possible locations for on-site disposal



Project Details

In the summer of 2022, OMAFRA and Ontario Pork hired summer students to assist producers with developing their on-farm emergency plans

- 1 OMAFRA Student
- 2 Ontario Pork Students

A major production system in Ontario also hired 3 students to assist their own producers with developing plans

All 6 students were trained as a group, and worked collectively throughout the summer

- Training was provided by OMAFRA, Ontario Pork and Swine Health Ontario
- Training included topics such as deadstock regulations, Ag Maps, ASF, etc.

Ontario Pork has retained 2 students on a part time basis to continue with the project throughout the fall and winter

Project Objectives

Assist producers with:

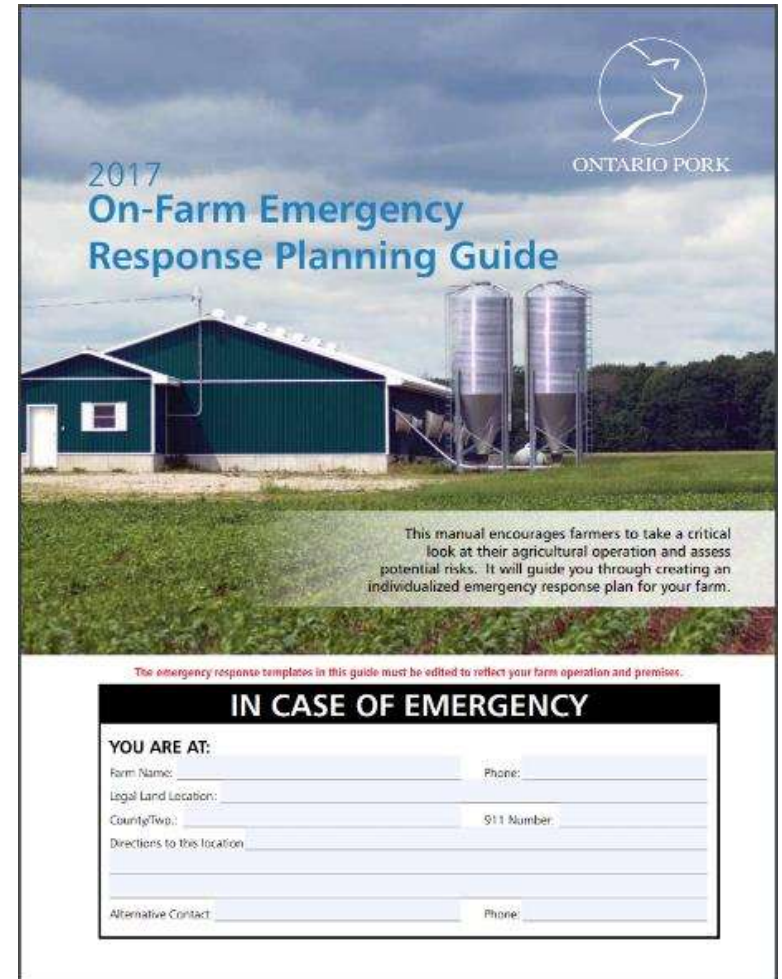
Planning for how to manage a major market interruption on their farm

Filling out the foreign animal disease section of Ontario Pork's On-Farm Emergency Response Planning Guide

Developing site maps with all major components identified

Determining estimated burial and compost capacities on farm

Uploading the files to Ontario Pork's information system for quick reference in an emergency



Project Status and Summary to Date



Total Plans Completed to Date (Nov 2022)	284
% of Provinces Sows Covered under a Plan	16.46%
% of Total Premises Completed (not including Hobby Premises)	9.16%

Project Status and Summary to Date



	Number of Premises by Type	% of Completed Premises
Nursery	50	18%
Finisher	168	59%
Nursery/Finisher	9	3%
Farrow to Wean	43	15%
Farrow to Finish	5	2%
Boar Stud	1	0%
Gilt/Gestation	8	3%

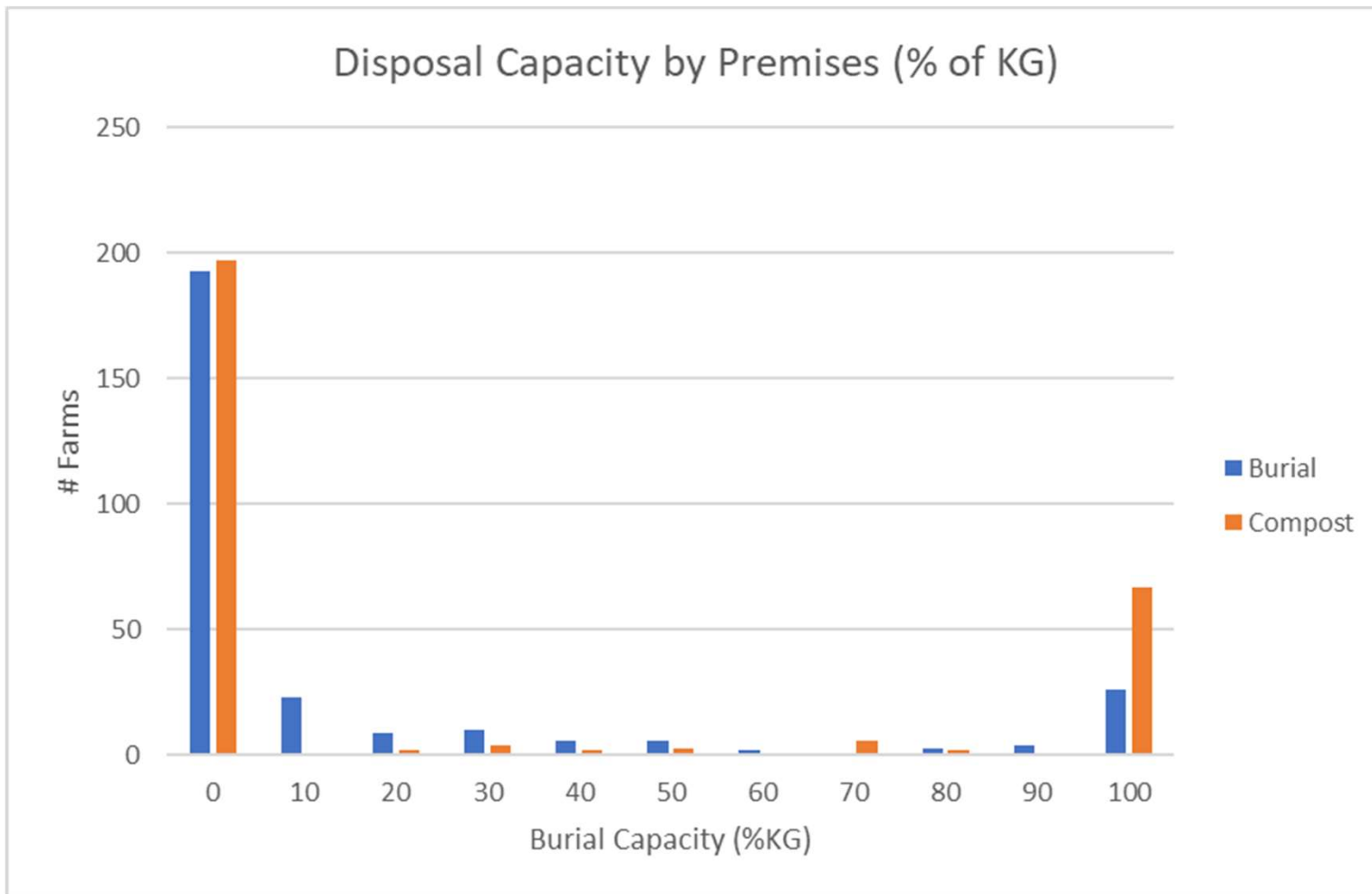
Project Status and Summary to Date



Sow Spaces	53,816
Gilt Spaces	6,506
Boar Spaces	401
Wean/Nursery Spaces	250,208
Grow/Finish Spaces	388,269
Total Hog Spaces	699,200
Total KG	70,894,975
% Burial KG	10.17%
% Compost KG	24.85%

% Burial and % Compost ability accounts for systematic tiling on farms

Project Status and Summary to Date



Summary

Having an on-farm emergency plan:

- Is instrumental in assisting with a response to any on-farm emergency
- Allows for pre-planning and decision making when peoples heads are clear

Plans for completed farms are stored:

- At the farms and/or with family members
- Digitally at Ontario Pork, linked to the producer's file
 - Aim is to review the plan every few years with the farm's CPE validation

Planning is underway to extend the project into next year

- There is a waiting list of producers who have signed up for assistance

What can you do to help?

- Encourage your clients to work on their own plan, or register for assistance through the project by emailing emergplanning@ontariopork.on.ca