

WELCOME TO BIG BUG DAY 2022



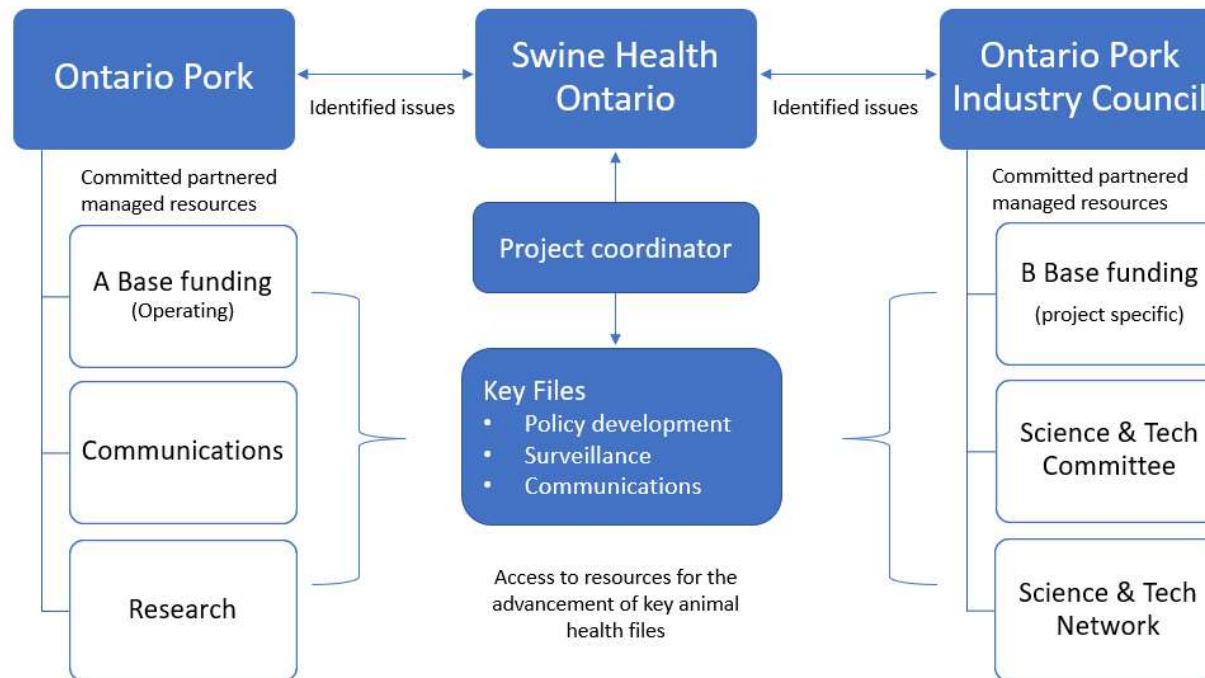


SHO Vision and Mission

Vision: Swine health excellence enables the Ontario industry to maintain a global competitive advantage

Mission: Continuous improvement in swine health management for Ontario producers through proactive, practical, and responsive plans that collaboratively engage the entire swine industry

SHO Structure





Disease Information

Swine health bulletins and links to keep you informed about emerging diseases



Biosecurity

Resources to help producers and industry make informed decisions to reduce the risk of disease transmission



OSICC

The Ontario Swine Incident Command Center will increase industry capacity to manage emergencies by ensuring a coordinated and effective industry response



AgManifest

AgManifest automatically reports animal movement information to PigTrace on behalf of the participants



SHARC

Industry-led initiative based on disease status, transparency and co-operation to control and eliminate swine disease



African Swine Fever (ASF) Resources

Ontario Pork has resources available to help you to raise awareness and reduce the risk of African Swine Fever.

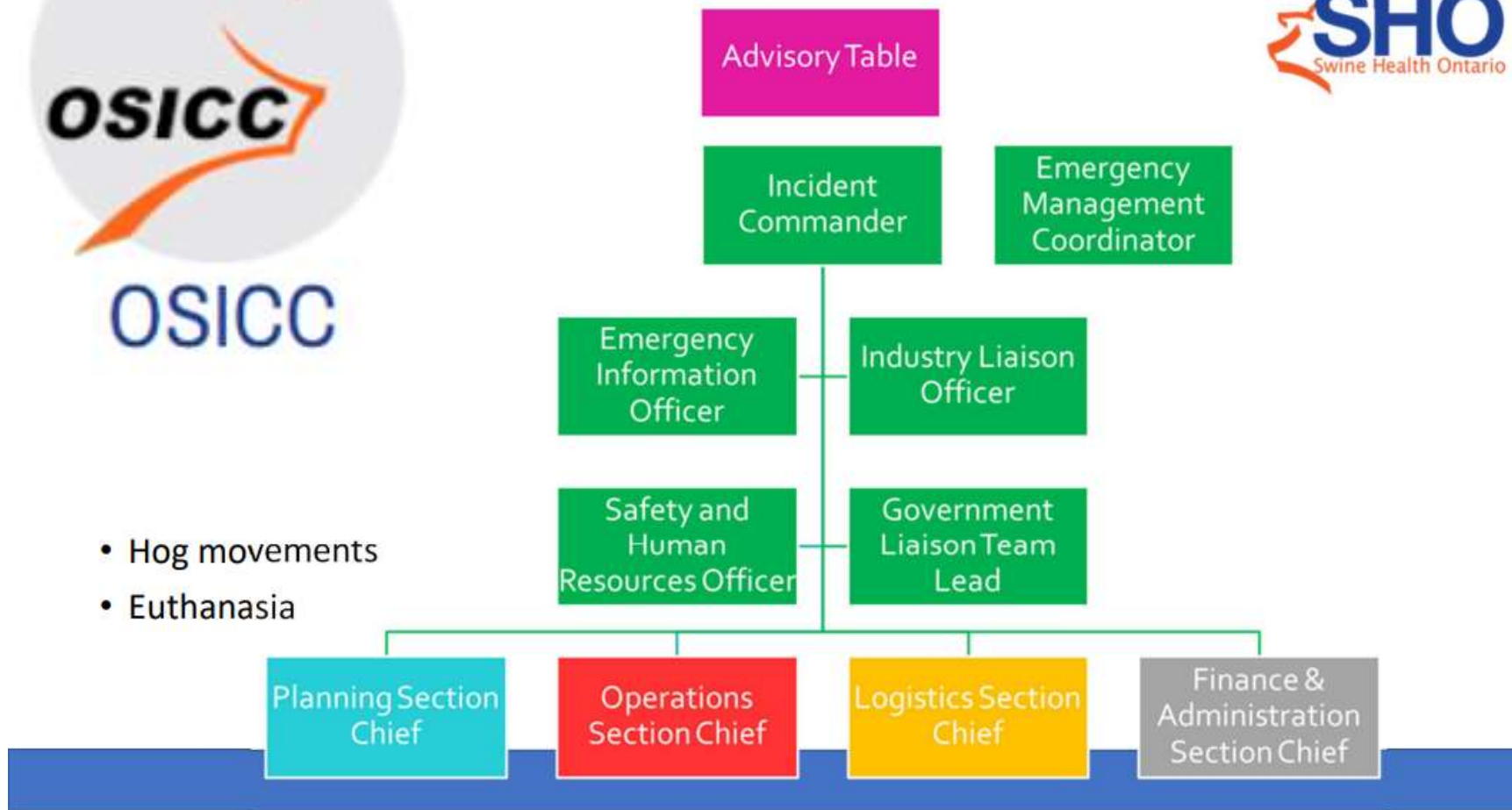


Emergency Planning

Emergency preparedness is important for everyone, but especially for livestock because of the animals' size and shelter and transportation requirements.



- Hog movements
- Euthanasia



Ontario Swine Incident Command Centre:

Can you help with crisis response?



Company/ organization name: _____

Lead contact for swine industry crisis planning: _____

Phone for primary contact: _____ Email for primary contact: _____

Backup contact for swine industry crisis planning: _____

Phone for backup contact: _____ Email for backup contact: _____

In the event of a crisis, we hope to make the following supports/ staff available:

ROLE	# and/ or NAMES of PEOPLE AVAILABLE	COMMENTS
On-farm support: Euthanasia & depopulation		
On-farm support: Animal care		
On-farm support: Cleaning and disinfecting		
On-farm and team support: Health and safety		
On-farm and team support: Mental health and well-being		
Logistics: Zoning and permitting		
Logistics: Transportation (animal)		
Logistics: Delivery (supplies)		
Logistics: Disposal		
Procurement: Sourcing and tracking supplies and equipment		
Procurement: Warehousing		
Procurement: Distribution of supplies		
Procurement: Budget and accounting support		
Communications: Telephone triage		
Communications: Producer messaging and response		
Communications: Social media monitoring, information sharing and support		
Communications: Media monitoring and response		

SHO Leadership Team Members



Jay Squire

Industry Representative, Chair



Cam Farrell

Ontario Pork Representative,
Vice-Chair



Jessica Bickle

Industry Representative



Chris Cossitt

Ontario Pork Representative



Dr. Clint Lichty

DVM, Industry Representative



Dr. Catherine Templeton

DVM, Industry Representative



Dr. Cesar Caballero

DVM, DVSc, OPIC
Representative



Jeff MacDougald

OPIC Representative, OPIC
Chair



Dr. Tim Pasma

DVM, OMAFRA Ex-Officio
Representative



Frank Wood

Ontario Pork Ex-Officio
Representative



Jessica Fox

MSc, Swine Health Ontario
Manager



Tanya Terpstra

OPIC Managing Director