

On-Farm Emergency Planning

Laura Eastwood
Swine Specialist, OMAFRA

Frank Wood
Manager: Industry & Member Services,
Ontario Pork

Ontario 



ONTARIO PORK

Have You Prepared For A National ASF Event On Your Farm?

Detection of ASF in Canada will impact every pork producer in the country, not just infected farms, due to severe market interruption.

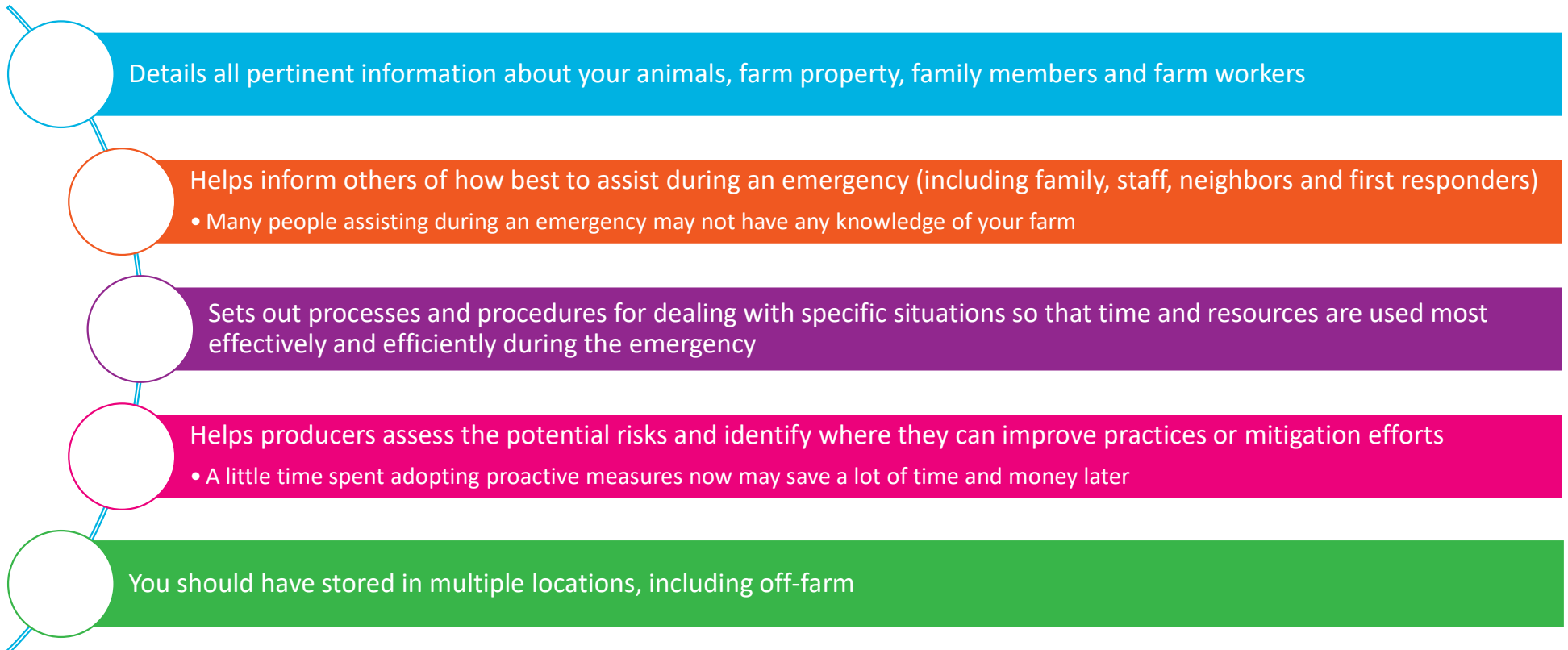
The thought of preparing for a devastating event such as ASF can be daunting and scary.

But it is much better to build a plan now, during peace time, so you can think through your options, understand your farm's limitations and not have to make critical decisions in the heat of the moment.

Planning at the national and provincial industry levels has been underway since 2019. Now it's time for you to get ready on your farm.

What Is An On-Farm Emergency Plan?

A document that:



Why Is An On-Farm Emergency Plan Important?

Decisions are made in a low stress time, not in the heat of the moment

Shows resources and limitations for your own farm so that decisions can be made, requirements can be determined

Pulls together the animal welfare, human welfare, environmental aspects, but also the monetary/insurance implications

Simple things like who to call, who needs to be called, how to deal with farm traffic are pre- decided (similar to knowing that you call 911 in case of a fire)

Funding is available for upgrades – need to know the gaps to determine needs! (example – I will need to block off a driveway – could potentially get funding for a gate)

Why Should I Care About Having An On-Farm Emergency Plan?

Peace of mind knowing the ramifications of an emergency on livelihood.

Will I be able to pay my bills? Keep my house? Feed my kids?

There will always be unforeseen circumstances in an incident.

Put efforts to individual tasks in an emergency, instead of the overall response that you already planned!

Having a plan may show confidence to lenders and/or insurers.

This may provide benefits during an event.

A plan allows for financial planning for continuity of business, or retirement, or other business decisions and allows for business resilience

The faster an emergency can be resolved, the better for the industry and individual farm businesses.

Planning helps hasten resolution and proper use of resources.

You will be asked for it during an ASF emergency.

CFIA, OMAFRA, Ontario Pork will want maps/layouts/plans if you are a suspect ASF case or during coordination of a welfare cull.

Ontario Pork's On-Farm Emergency Response Planning Guide



Barn Fires

Accidents

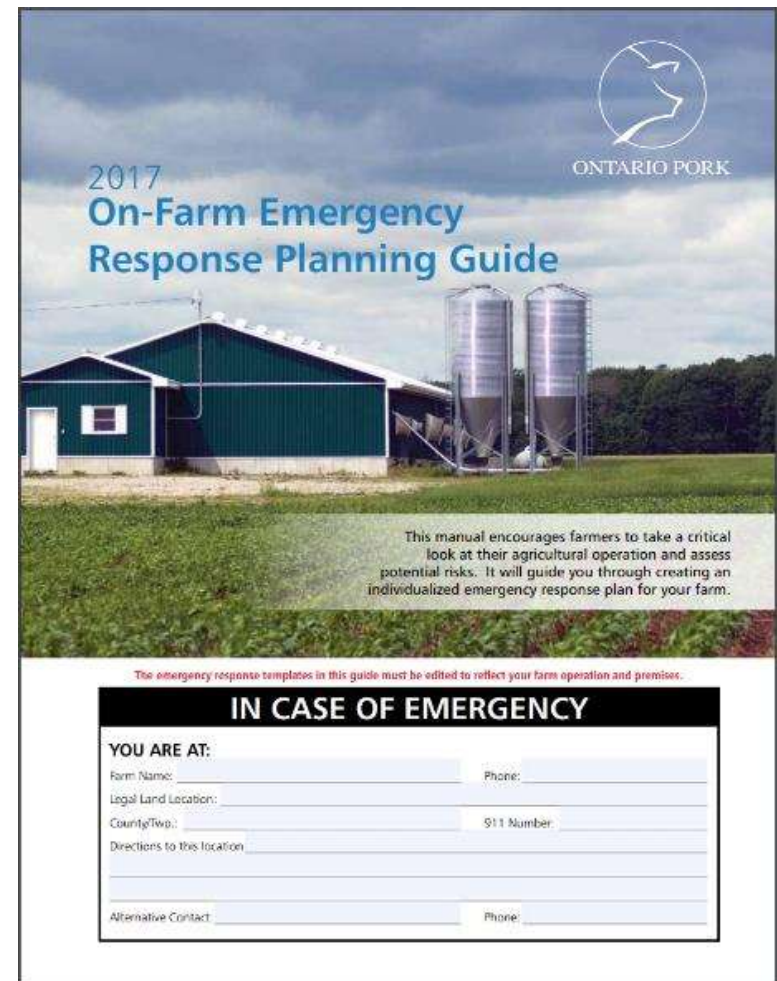
Environmental Issues

Animal Care

Foreign Animal Disease

Activism and protests

Mental Health





What Should My Plan Include?

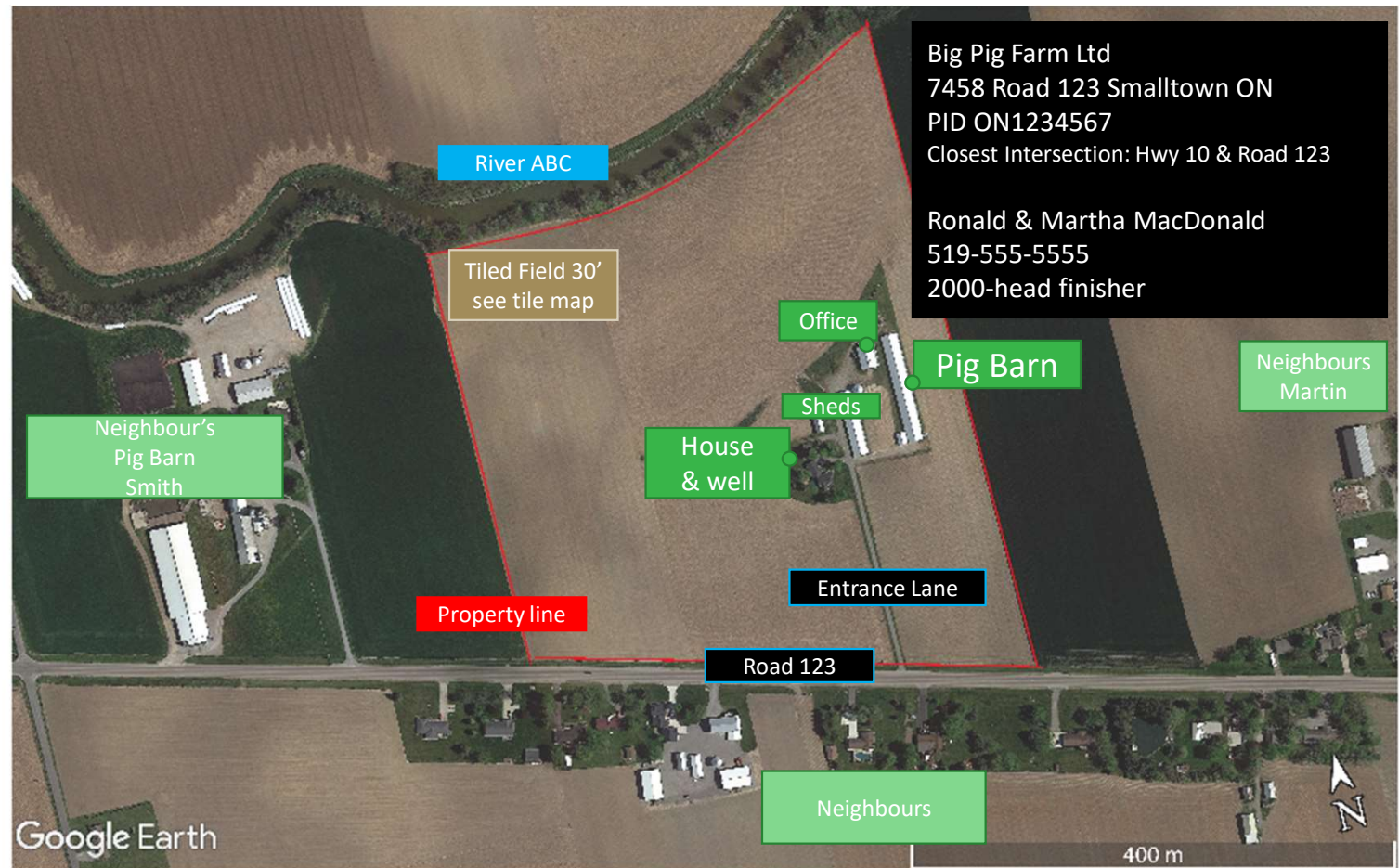
Farm property info	<ul style="list-style-type: none">• Full address including 911 number and directions• Aerial map showing full farm layout with road access, building locations
Family members and farm workers	<ul style="list-style-type: none">• Contact phone numbers and relationship to owners
Animals	<ul style="list-style-type: none">• Full inventory with types and ages• Location within barn
Other Contacts	<ul style="list-style-type: none">• Vet, feed company, processor, animal owner/contractor, banker, insurance agent, etc.
Depopulation and disposal plan	<ul style="list-style-type: none">• How long can you hold animals on farm• When and how would you stop breeding• Depopulation methods available on farm• What % of herd population can be disposed of on farm (burial and/or composting)• Where can disposal sites be located



Example: Full Property View

Details to Note:

- Farm Address, PID
- Your name & contact, site manager contact
- Barn details: size, # of pigs typically inside
- Land details: flat, river, tile direction, etc.



Example: Close up Details

Details to Note:

- Farm Address, PID
- Your name & contact, site manager contact
- Barn details: size, layout, pen styles, # of pigs typically in each pen, doors, loading docks, manure storage
- Wells, feed bins, deadstock bins, equipment, driveway flows.





Example: Locating Disposal Sites

15m setback to the property line

30m setback to the road

50m setback to drilled well

100m setback to other well

100m flowpath to tile inlet

100m flowpath to surface water

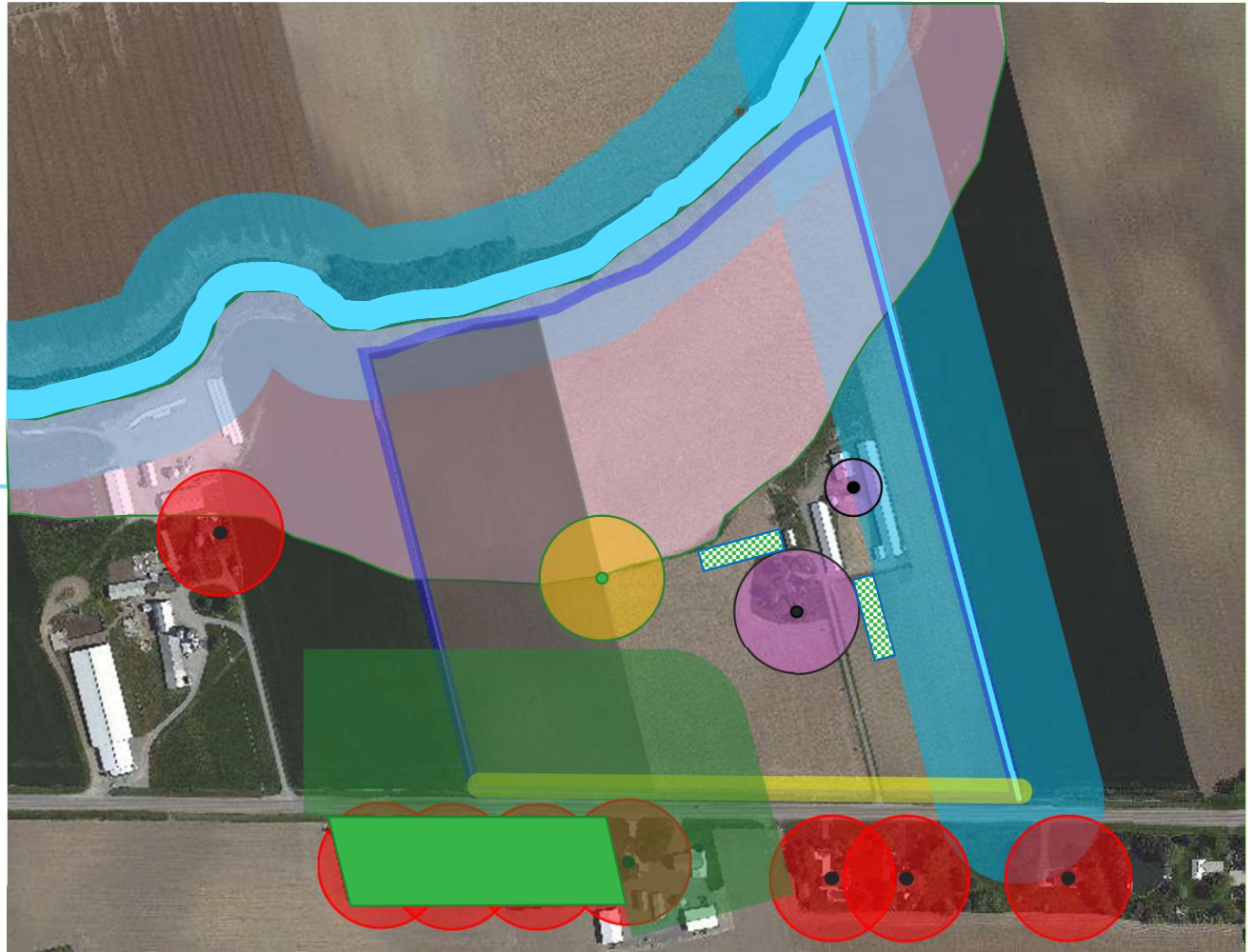
Outside of 1/100 year floodplain

Mapped tile area (narrow spacing)

100m setback to off site residence

200m setback to residential area

Possible locations for on-site
disposal





Help Is Available To Build Your Plan!

Work through the On-Farm Emergency Response Planning Guide to create a plan for your farm

- The guide walks you through a clear step-by-step process

Include key components in your plan. Examples include:

- What % of your hog population can you dispose of on farm? Where are the disposal sites?
- How long can you hold pigs on farm if movements stop?
 - Include options on facility modifications such as converting hallways to temporary pens
- Outline preferred vehicle and people flow on/off property

Work with your Nutrient Management Consultant to develop farm maps for on-farm disposal

Ontario Pork & OMAFRA staff are available to help you create and/or review a plan

- Summer students will be available to work with producers and industry in 2022

Cost-Share Funding is Available



- Targeted intake under the Canadian Agriculture Partnership to provide funding for Ontario pork producers, processors and other agri-businesses across the pork value chain for enhanced biosecurity and emergency preparedness planning activities to reduce the likelihood of the introduction of ASF into Ontario.
- Eligible application forms will be accepted on a first come, first served basis from Nov 5, 2021, to March 21, 2022, or while intake funding remains available, whichever comes first.
- Eligible applicants can apply for reimbursement of 50% of eligible costs, up to a maximum of \$40,000 per applicant
- There are 8 eligible categories under the program
 - Education, training, Assessment and Planning
 - Defining zones and controlled access points
 - Establishing cleaning and disinfecting practices
 - Establishing isolation or segregation facilities
 - Preventing access by wildlife, pests and rodents
 - Health management
 - Establishing facilities to manage deadstock
 - Equipment and services
- Full program information can be found by visiting www.omafra.gov.on.ca/english/cap or by contacting the Agriculture Information Contact Centre at 1-877-424-1300 or ag.info.omafra@ontario.ca