

# Ontario Swine Incident Command Centre & ARC&E

Jessica Fox, Swine Health Ontario Manager



# Ontario Swine Incident Command Centre (OSICC)

## OSICC

- Swine Health Ontario
- OPIC
- Ontario Pork

## Coordinated response to large scale incidents

- Foreign animal disease
- Market interruptions

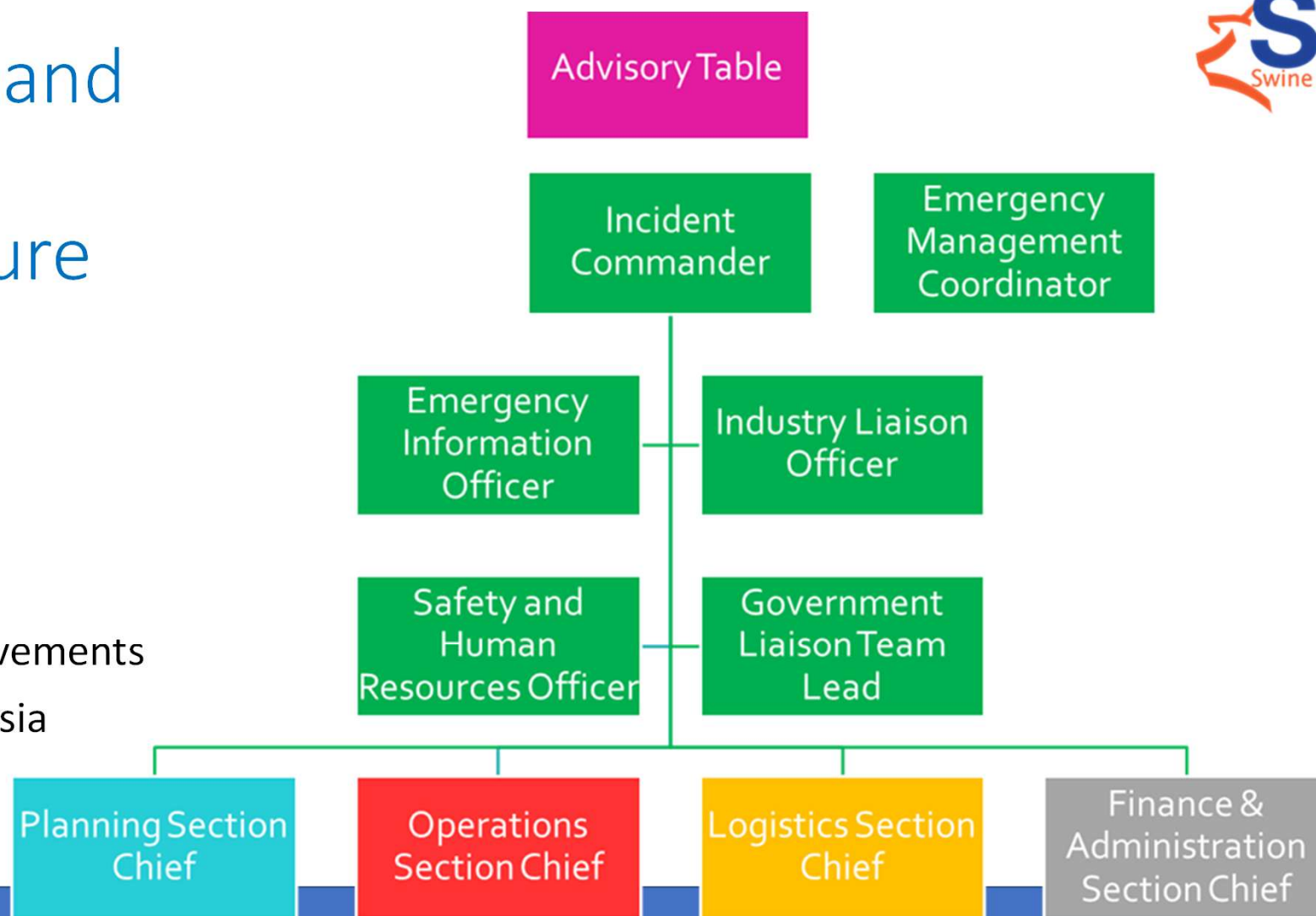
## Based on Incident Management System structure

- Coordinated responses with external entities (OMAFRA, CFIA)

# Command Group Structure



- Hog movements
- Euthanasia



# OSICC Activities

## Task specific direction

- Communications: producers, industry, government, media, consumers
- Mobilizing volunteers and resources: captive bolt guns, PPEs
- Coordinating depopulation and disposal on-farm

## Meetings

- Quarterly in “peacetime”
- Review projects for continuous improvement



# Traceback Tools



PigTrace (CPC)

Mandatory

National level reporting of  
all pig movements



AgManifest (Ontario Pork)

Voluntary

Provincial level reporting of  
pig movements (satisfies  
requirements of PigTrace)

**ARC&E**

► Swine Health Ontario Area Regional Control &  
Elimination (ARC&E) Program

ARC&E (OPIC)

Voluntary

Provincial level reporting of  
disease status by premises,  
including radius mapping



# Continuous Improvement Projects

## Research



Ontario Pork and  
University of Guelph  
Hog reduction  
modelling  
Slaughter capacity  
Breeding reductions

## Volunteers



Building volunteer  
capacity for  
emergency

## Resources



Developing  
minimum stock on  
hand resources:  
PPE, bullets

## Emergency plans



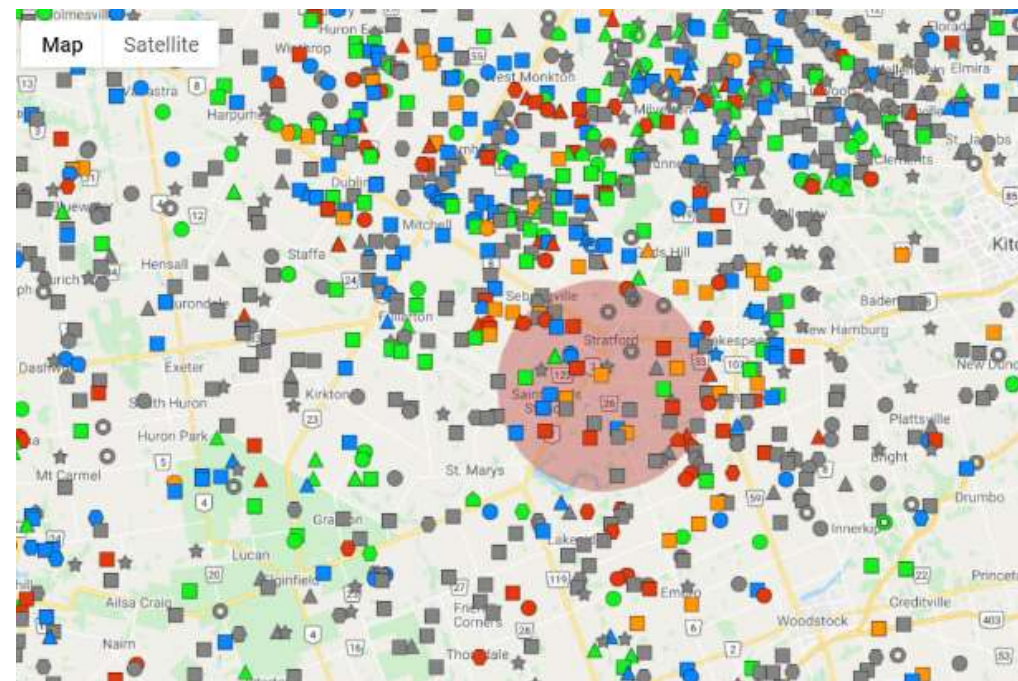
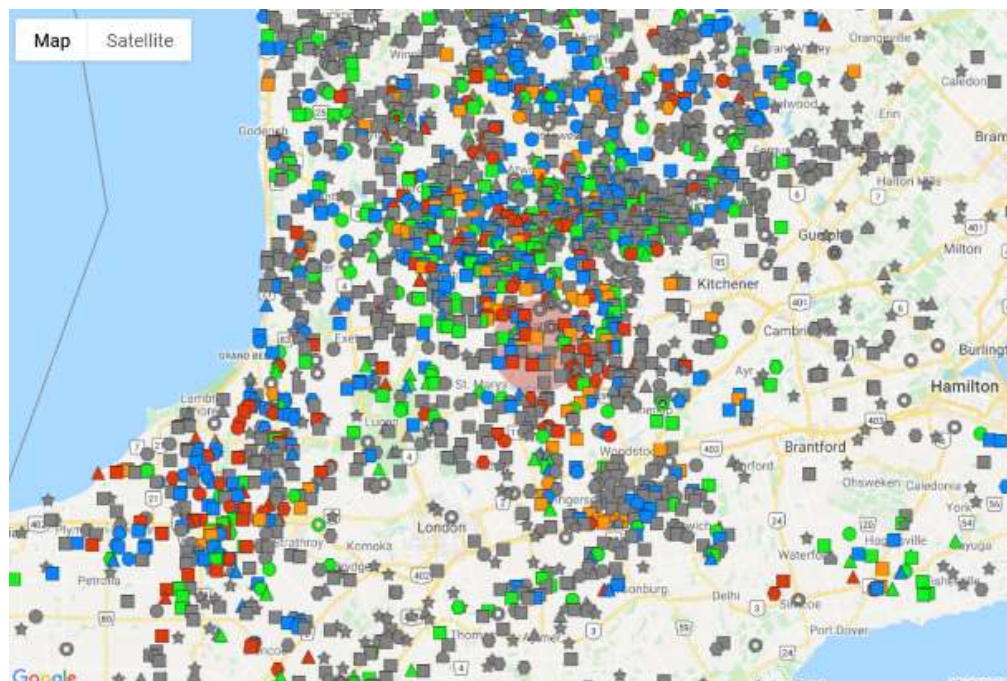
Working with  
producers on  
emergency farm  
plans

## ARC&E Program

- Voluntary disease info sharing system overseen by OPIC and SHO
- Tracks status of barns for PRRS, PEDv and PDCoV
- Allows producers to track the status of their own barns and other enrolled barns in their area and use that information when considering decisions related to hog movements/placements, manure spreading and barn building



# ARC&E Radius Mapping Capabilities





## ARC&E Enrollment

- Producers who have not yet created a login on the new site, please visit [onarce.ca/Enroll](https://onarce.ca/Enroll) today!
  - If you had a login on the old site, they are no longer active, and a new login is required
- Once you are enrolled, all results come directly from the lab and no regular updating is required
  - Please ensure Ontario Pork has accurate information on your premises

